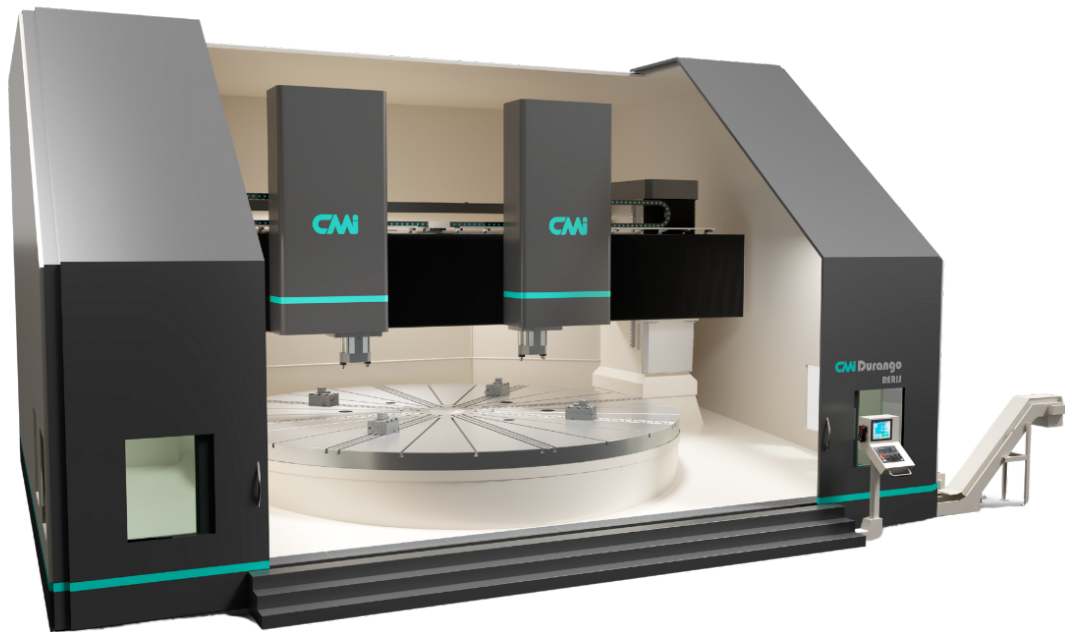


RERIS L 6500-8000

Vertical Lathe

APPLICATIONS:



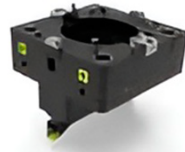
VERTICAL LATHE RERIS L Technical specifications

Max. workpiece diameter (mm)	7200	7700	8700
Chuck diameter (mm)	6500	7000	8000
Max. weight (Tons)	200	200	200
Max. chuck speed (rpm)	60	55	50
Turning power (kW)	260	260	260
Crossrail vertical travel "W" (mm) - (Optional)	1000 / 2000		
Z-axis travel (mm)	1200 / 1500 / 2000		
Ram section (mm)	400x400 (Z-axis: 1200) / 500x500 (Z-axis: 1500 / 2000)		
X-axis feed rate (m/min)	10 / 15		
Z-axis feed rate (m/min)	10 / 15		

Heads



TOOL
HOLDER HEAD



AUTOMATIC
TURNING BLOCK

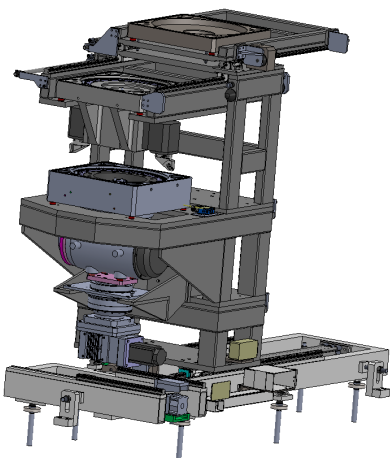


FIXED
TURNING BLOCK

Tool warehouse

Number of tools	40 / 60 / 80 / 100
Tool weight capacity	20 kg / 35 kg
Tool types	ISO 50 / 60 HSK-63 / 80 / 100... CAPTO C-6 / -8 / -10...

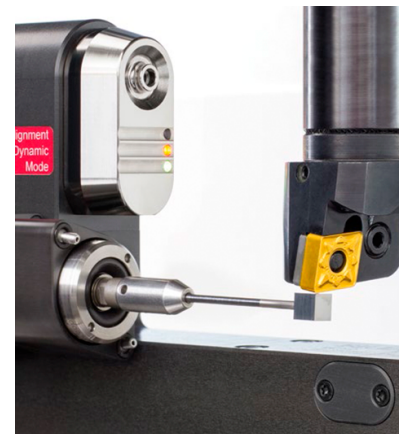
Other accesories and tools



HEAD AND
WORKPIECE CHANGER



PALLET
EXCHANGER



TOOL AND
WORKPIECE PROBE